

Michael W. Frerichs

ILLINOIS STATE TREASURER

2024 LIVE AUCTION BOOKLET

SATURDAY, AUGUST 17 • 11:00 AM • ILLINOIS STATE FAIR

TERMS AND CONDITIONS OF SALE

AUCTION DATES, TIMES & LOCATION

- The auction shall be conducted on August 17, 2024 at the Illinois State Fairgrounds (Lincoln Stage), Springfield, IL, starting at 11:00 a.m. There will be a preview from 9:00 a.m. until 11 a.m.

CONDITION & DESCRIPTION

- The condition of the items being offered varies greatly. The buyer understands and agrees that the items are sold and accepted by buyer on an "AS IS, WHERE IS" basis with all faults. Any description of items offered by the Office of the Illinois Treasurer ("Treasurer") or its agents is for general informational purposes only, and the items may or may not be exactly as described. The Treasurer offers no warranty or guarantee of condition or authenticity of any item.

INSPECTION & VIEWING

- Bidders are urged to inspect items prior to bidding. Photographs may not show all items in a given lot.
- All of the items will be available for inspection on July 25th, 2024 from 10:00 a.m. until 3 p.m. in the Treasurer's office at 1 E. Old State Capitol Plaza, Springfield IL.
- Announcements made the day of auction take precedence over all printed matter.

REGISTRATION

- Persons wishing to bid on items at the auction are required to obtain, complete, and submit a bidder registration card (presented with a driver's license/state ID card for verification) at the auction venue prior to the sale. Upon submission and approval of a bidder registration card, each bidder will obtain a bidder number to complete registration.
- Note: Each registered bidder is solely responsible for the use of his/her bidder number and any use by another person is presumed to be with the consent of the registered bidder and is contractually binding on the registered bidder.

BIDDING

- The live auction shall be conducted as an open outcry public auction with progressive bidding. At the close of the live bidding the Auctioneer shall accept the highest bid received, provided that such bid equals or exceeds the unpublished reserve price for the lot. It is each bidder's responsibility to pay attention to items being offered for sale and to bid on items in which the bidder is interested. By bidding, you agree that if you are the high bidder for any lot, you are forming a legal and binding contract to purchase that lot. Do not bid if you do not intend to pay for the item. Do not bid past your available funds, because all purchases must be settled by the completion of the auction. Generally, items are sold in the sequence as listed in the sales catalog. Lot numbers and lot/item descriptions are for administrative purposes only and may not describe the item accurately. Bidders are responsible to ensure the lot number or announced description of any item they intend to purchase matches the item inspected. Sales of items will not be canceled due to bidder misunderstanding, failure to pay attention to the bidding, or failure to inspect items.

PAYMENT

- Payment must be received and items removed from the auction site no later than upon completion of the auction.
- Accepted methods of payment are American Express, Discover, Master Card, and Visa, as well as cash. Please make certain that all successful bids are within credit card limits and bidders must make all necessary arrangements in advance of the auction. Personal checks, money orders, or cashier's checks will not be accepted.





1	LADY'S ROLEX OYSTER DATE JUST STAMPED 18K YELLOW GOLD, SERIAL # 8803048, BEZEL DIAMOND SET, CRYSTAL SAPPHIRE, MOVEMENT CERTIFIED CHRONOMETER, DIAL GOLD WITH BATON, PARALLEL TYPE HANDS AND TEN DIAMOND NUMERALS CIRCA 1985, BRACELET: PRESIDENT B8570, PAPERS, NO BOX. FORTY BEAD SET ROUND BRILLIANT DIAMONDS G-H, VS-2 TO SI1, TL WT OF DIAMONDS .054CT, TL WT OF WATCH 45.16DWT
2	ONE ELECTRONICALLY TESTED SILVER & GOLD HAND MADE SWORD PIN. THE VICTORIAN PIN IS 8" LONG CONTAINING: ONE HUNDRED ELEVEN BEAD SET ROSE CUT DIAMONDS APPROX 0.50CT. G-I, SI-1 TO SI-2, SIX BEAD SET ROUND MIXED CUT NATURAL RUBIES APPROX 0.72CT. TL WT OF PIN 22.78DWT.
3	ONE ELECTRONICALLY TESTED WHITE GOLD MAN'S 3-STONE RING CONTAINING: THREE BEAD SET ROUND BRILLIANT CUT DIAMONDS G-I, VS-1 TO VS-2, APPROX 1.00CT TL WT. TL WT OF RING 5.86DWT
4	THREE RINGS STAMPED 18K YELLOW AND WHITE GOLD SOLITAIRE ENGAGEMENT RING, AND WEDDING BAND AND ROLEX LOOK RING CONTAINING: ONE BEZEL SET ROUND BRILLIANT CUT DIAMOND L, VS-1, APPROX 0.25CT WITH MEDIUM BLUE FLUORESCENCE, EIGHT PRONG SET ROUND BRILLIANT CUT F-G, SI-1 TO SI-2, APPROX WT 0.36CT ONE PRONG SET SADDLE SHAPED CABOCHON JADEITE APPROX WT 1.85CT. TL WT OF DIAMONDS 0.61CT, TL WT OF JADE 1.85CT, TL WT OF WEDDING BAND AND ROLEX LOOK RING 9.75DWT
5	1999 AMERICAN GOLD EAGLE COLLECTION: 1-1 OZ, 1-1/2 OZ, 1-1/4 OZ, 1-1/10 OZ
6	FLOWER AND LEAF DESIGN BANGLE STAMPED 18K YELLOW GOLD V SPRING AND SAFETY CLASP CONTAINING: SIX PRONG SET ROUND BRILLIANT CUT DIAMONDS APPROX 0.32CT TL WT, FOUR AKOYA CULTURED PEARLS WHITE IN COLOR, ROSE OVERTONE WITH GOOD LUSTER. TL WT OF BANGLE 20.04DWT
7	SIX DIE STRUCK AND TESTED 21K YELLOW GOLD BANGLE BRACELETS 3.5MM TO 4.5MM WIDE. TL WT 47.85DWT
8	1910 U.S. TEN DOLLAR INDIAN HEAD GOLD COIN
9	1915 AUSTRIAN EMPIRE 100 CORONA GOLD COIN
10	14 INDIAN CENTS; COPPER NICKEL: 2-1859, 1860, 2-1862, 6-1863, BRONZE: 1887, 1900, 1907
11	COIN BRACELET 14K & 18K STAMPED AND TESTED WITH DOUBLE V SPRING CLOSURE AND SAFETY CHAIN. THE BRACELET IS 7.5 INCHES LONG AND 27MM WIDE. THE FOUR U.S. GOLD COINS ARE: FIVE DOLLAR LIBERTY HEAD 1880, 1886, 1897, 1898
12	2-10 OZ SIMMONS REFCO .999 FINE SILVER BARS
13	25 PEACE DOLLARS: 5-1922, 4-1922D, 5-1922S, 2-1923, 1923D, 3-1923S, 2-1925, 1926, 2-1926S



14	24 MORGAN DOLLARS: 1883S, 1885, 1888, 1896, 3-1900O, 12-1921, 4-1921D, 1921S
15	1776 THREE SHILLING NOTE "TO COUNTERFEIT IS DEATH"
16	BAUME AND MERCIER WRISTWATCH STAMPED 18K YELLOW GOLD SERIAL # 46632, CASE: 22 MM, CROWN: SYNTHETIC SAPPHIRE, DIAL: DIAMOND PARVE ROUND WITH BATON. BRACELET: E STRAND ROPE CHAIN, DOUBLE V SPRING CLASP, CONDITION G-7 NEAR FINE CONTAINING: 36 ROUND BRILLIANT CUT DIAMONDS APPROX TL WT OF 36 STONES 0.44CT G-I, VS-1 TO VS-2, SIXTY PAVE' SET SINGLE CUT DIAMONDS APPROX WT 0.54CT G-H, VVS-1 TO VVS-TL WT OF DIAMONDS 0.98CT, TL WT OF WATCH 24.17DWT
17	63 BARBER HALF DOLLARS AND OTHER: 63 BARBER HALVES MIXED DATES AND MINT MARKS, 1964 KENNEDY HALF
18	3 ANCIENT COINS: GREECE 336-323 BC ALEXANDER THE GREAT OBVERSE HEAD OF HERCULES, REVERSE ZEUS SILVER, HADRIAN 117-138 AD SILVER DENARIUS; ROME GORDIAN III 238-244 AD
19	108 BUFFALO NICKELS INCLUDING: 1913 TYPE I, 1913D TYPE I, 1913S TYPE I, 1914, 1914S, 1915S, 1916D, 1916S, 1917S, 1918S, 1921S, 1923S, 1924D, 1926S, 1931S AND 93 MIXED DATES AND MINT MARKS
20	1883, 1884 CARSON CITY SILVER DOLLARS
21	1929 NATIONAL CURRENCY: THE CITIZENS NATIONAL BANK OF CHICAGO HEIGHTS ILLINOIS FIVE DOLLAR NOTE
22	SERIES 1917 U.S. TWO DOLLAR LARGE SIZE NOTE
23	SERIES 1914 U.S. TEN DOLLAR LARGE SIZE NOTE, SERIES 1923 LARGE SIZE ONE DOLLAR SILVER CERTIFICATE
24	LINCOLN CENT COLLECTION IN WHITMAN BOOKS: 1909-1940 COMPLETE INCLUDING ALL KEY DATES, [1922 PLAIN SPACE FILLED WITH WEAK STRIKE D], BOOK II 1941-1968 53 MIXED DATES AND MINT MARKS
25	1880S MORGAN DOLLAR: PGCS GRADED MS 67
26	U.S. SILVER DOLLARS 100 YEARS: 1896 MORGAN DOLLAR, 1996 AMERICAN SILVER EAGLE
27	ONE TROY POUND SILVER ROUND .999 FINE
28	102 WALKING LIBERTY HALF DOLLARS; 1917S OBVERSE, 1938D, 99 COMMON MIXED DATES AND MINT MARKS, ONE HAS NO DATE
29	297 WASHINGTON QUARTERS PRE-1965 MIXED DATES AND MINT MARKS, 1 CLAD
30	STAMPED 14K YELLOW GOLD LADY'S SOLITAIRE RING WITH HALF ROUND SHANK CONTAINING: ONE PRONG SET OLD EUROPEAN CUT DIAMOND APPROX WT 1.03CT J, SI-1. TL WT OF RING 1.68DWT
31	TWO ELECTRONICALLY TESTED 14K YELLOW GOLD WREATH MOTIF BROOCHES CONTAINING: 70 AKOYA CULTURED PEARLS 4.0MM TO 6.0MM, SEVEN PRONG SET ROUND MIXED CUT NATURAL SAPPHIRES APPROX 0.63CT, SEVEN PRONG SET ROUND MIXED CUT NATURAL RUBIES APPROX 0.56C, TL WT OF BROOCHES 32.12DWT





<p>32</p>	<p>ONE LOT STAMPED AND TESTED PLATINUM & 14K YELLOW GOLD CAST SOLITAIRE RINGS AND WEDDING BAND. ONE BAND SET WITH 16MM X 12MM OVAL TIGER EYE QUARTZ STONE, ONE BEZEL SET STANDARD CUT NATURAL BLACK STAR SAPPHIRE APPROX WT OF 6.39CT HEAVILY INCLUDED, DARK, SLIGHTLY GREYISH, BLACK COLOR. THIS STONE HAS A COMPLETE 6 RAY STAR WITH MEDIUM INTENSITY. TL WT OF COLORED STONES 6.39DWT, TL WT OF RINGS 13.34DWT</p>
<p>33</p>	<p>STAMPED AND TESTED 14K YELLOW GOLD CAST AND HAND ASSEMBLED ART NOUVEAU & RETRO BROOCHES WITH VICTORIAN DANGLE WITH POLISHED AND ENAMELED FINISH. VICTORIAN DANGLE IS NOT GOLD. PIECES CONTAIN ONE PRONG SET OLD EUROPEAN CUT DIAMOND APPROX 0.11CT G, I-1, THREE BEAD SET ROSE CUT DIAMONDS APPROX TL WT 0.13CT G-H, VS-1 TO VS-2, FOUR BEAD SET ROUND MIXED CUT NATURAL RUBIES APPROX WT 3.08CT, FIFTEEN SEED PEARLS 2.7MM TO 1.6MM, WHITE IN COLOR, TL WT OF BROOCHES WITH VICTORIAN DANGLE 13.11DWT</p>
<p>34</p>	<p>2 PAIRS ELECTRONICALLY TESTED 10-14K YELLOW GOLD HAND ASSEMBLED VICTORIAN EARRINGS WITH POSTS, SCREWBACKS & WIRE BACKS CONTAINING: TWO BEZEL SET OVAL MIXED CUT NATURAL BLACK ONYX APPROX 3.28CT, TWENTY-FOUR BEZEL SET DIAMOND SHAPE MIXED CUT BLACK ONYX APPROX 0.67CT, TWO PEG SET BRIOLETTES CABOCHON MIXED MODIFIED CUT BLACK ONYX APPROX 17.52CT. FOURTEEN SEED PEARLS 1.2MM TO 1.0MM WHITE IN COLOR . TL WT OF EARRINGS 6.90DW. ART NOUVEAU ELECTRONICALLY TESTED 9KT BROOCHES AND PENDANTS WITH POLISHED AND ENAMELED FINISH [VICTORIAN DANGLE WITH BLACK TRACERY ENAMEL IS NOT GOLD] CONTAINING ONE PRONG SET ROUND MIXED CUT ALMANDITE GARNET APPROX 0.22CT, ONE PRONG SET OLD EUROPEAN CUT DIAMOND APPROX 0.09CT G, SI-1, SIX BEAD SET ROUND MODIFIED CUT GARNETS APPROX TL WT 0.06CT, 55 SEED PEARLS 2.0MM TO 1.0MM WHITE IN COLOR [ONE PEARL MISSING]</p>
<p>35</p>	<p>MEN'S BAUME & MERCIER RECTANGULAR CASE WRISTWATCH STAMPED 14K YELLOW GOLD: SERIAL # 973215, NO CRYSTAL, MOVEMENT 17J, DIAL: GOLD RECTANGULAR WITH BATON, BRACELET MESH WITH FOLD OVER CLASP, TL WT OF WATCH 40.68DWT</p>
<p>36</p>	<p>LADY'S STAMPED 10-14K YELLOW GOLD WRISTWATCH LUCIEN PICCARD ROUND CASE, BRACELET: BLACK SUEDE STRAP 10KT BUCKLE CONTAINING: EIGHT PRONG SET OVAL CABOCHON STANDARD CUT NATURAL BLUE SAPPHIRES, APPROX WT 0.80CT, 40 AKOYA CULTURED PEARLS 3.5MM TO 3.3MM WHITE IN COLOR, ROSE OVERTONE, TL WT OF WATCH 15.38DWT</p>
<p>37</p>	<p>TWO ELECTRONICALLY TESTED 14K YELLOW AND WHITE GOLD CAST, HAND ASSEMBLED CAROUSEL HORSE PENDANTS WITH POLISHED AND TEXTURED FINISH, PENDANTS 42MM WIDE CONTAINING: 10 BEAD SET ROUND BRILLIANT CUT DIAMONDS APPROX WT 0.42CT H-K, SI-1 TO I-1, SIXTEEN BEAD SET ROUND MIXED CUT NATURAL RUBIES APPROX TL WT 0.64CT, TL WT OF PENDANTS 20.54DWT</p>

LOT 43



38	ONE STAMPED 14K YELLOW GOLD CAST X MOTIF RING W/ TAPERED HALF ROUND CONTAINING: ONE PRONG SET ROUND BRILLIANT CUT DIAMOND APPROX 0.19CT, EIGHT PRONG SET SINGLE CUT DIAMONDS APPROX 0.23CT G-H, VS-1 TO VS-2, TL WT OF RING 3.50DWT
39	TWO ELECTRONICALLY TESTED 14K YELLOW AND WHITE GOLD CAST SOLITAIRE RINGS WITH SPLIT SHANK CONTAINING: ONE MABE PEARL 16.8MM TO 16.2MM, ONE PRONG SET EMERALD CUT STANDARD STEP NATURAL AQUAMARINE APPROX 27.84CT, TL WT OF RINGS 15.10DWT
40	3 U.S. LIBERTY HEAD FIVE DOLLAR GOLD PIECES: 1880S, 1895, 1905S
41	6 AMERICAN SILVER EAGLES PROOF DOLLARS: 1986, 2-1987, 2-1988, 1990
42	SERIES 1918 U.S. LARGE SIZE NATIONAL CURRENCY ONE DOLLAR NOTE, FEDERAL RESERVE OF CHICAGO
43	SERIES 1907 U.S. LARGE SIZE FIVE DOLLAR "WOOD CHOPPER" NOTE
44	SERIES 1922 U.S. LARGE SIZE TEN DOLLAR IN GOLD COIN NOTE
45	1924 U.S. SAINT-GAUDENS TWENTY DOLLAR GOLD COIN
46	3 -TWO AND A HALF DOLLAR U.S. INDIAN HEAD GOLD COINS: 1908, 1911, 1928
47	114 ONE DOLLAR U.S. SILVER CERTIFICATES: 2-1928 FUNNY BACKS, 1934 FUNNYBACK, 35-1935, 76-1957
48	42 U.S. TWO DOLLAR BILLS: 5-1928, 15-1953, 22-1963
49	9 U.S. FLYING EAGLE CENTS: 5-1857 [ONE DAMAGED], 2-1858 SM LETTERS, 2-1858 LG LETTERS
50	4-1999 W U.S. 1/10 OZ PROOF AMERICAN GOLD EAGLES
51	12 U.S. AMERICAN SILVER EAGLES: 2-1986, 3-1990, 5-1994, 1997, 1999
52	107-1964 KENNEDY HALF DOLLARS
53	121 FRANKLIN HALF DOLLARS, MIXED DATES AND MINT MARKS
54	146 LIBERTY NICKELS, MIXED DATES
55	7 CANADIAN 1 OZ .9999 FINE SILVER MAPLE LEAF COINS
56	3-1923 U.S. LG SIZE ONE DOLLAR SILVER CERTIFICATES
57	TEN AND FIVE DOLLAR U.S. SILVER CERTIFICATES: 1934 TEN DOLLAR YELLOW SEAL TEN DOLLAR SILVER CERTIFICATE, 4 TEN DOLLAR BLUE SEAL, 12 FIVE DOLLAR BLUE SEAL SILVER CERTIFICATES 9-1934, 11-1953.
58	36 PEACE DOLLARS: 3-1922, 4-1922D, 2-1922S, 5-1923, 4-1923D, 8-1923S, 4-1924, 3-1926D, 1926S, 1927D, 1935
59	11 GOLD AND SILVER PINS: 2-14K GOLD BAR PINS W/ STONE/ SEED PEARLS 2.6G, 10K FLORAL PIN 2.1G, 8 SILVER PINS; 7 STERLING 46.5G TL WT, 1-.800 SILVER W/ RED STONE 6.7G INC STONE

60	ONE STAMPED YELLOW GOLD CAST AND HAND ASSEMBLED CHARM CHAIN BRACELET 6.5" LONG, 7.0MM DOUBLE ROUND LINK W/ V SPRING CLOSURE AND SAFETY CLASP. BRACELET CONTAINS EIGHTEEN 14K [UNLESS OTHERWISE STATED] YELLOW CHARMS ATTACHED AS FOLLOWS: 18K PUFFER FISH, ENGRAVED ROUND DISK CHARM, RECTANGULAR CUBE SET W/ 2 EMERALD CUT PERIDOTS, 18K SAILBOAT WITH CABOCHON CARNELIAN, A SNAIL, GLOBE, SEAHORSE, WISHING WELL, MERRY CHRISTMAS CHARM W/ SYNTHETIC RUBY AND 2 CULTURED PEARLS, BASE METAL BUDDAH WITH A CULTURED PEARL, MONEY BAG, 18K PURSE W/ CABOCHON TURQUOISE, VICTROLA SET W/ GLASS STONES, ROUND ENGRAVED DISC W/CULTURED PEARL, SOMBRERO, BASE METAL SEATED FIGURE, 18K STOP SIGN W/ GLASS STONES, HAPPY BIRTHDAY CHARM W/GLASS STONES. TL WT OF BRACELET 52.37DWT
61	ONE STAMPED 14K YELLOW GOLD LADY'S CAST AND HAND ASSEMBLED TENNIS STYLE BRACELET W/ V SPRING CLOSURE AND FOLD OVER SAFETY CLASP. BRACELET IS 7.25" LONG AND 6MM WIDE CONTAINING: SIXTY-TWO PRONG SET ROUND BRILLIANT CUT DIAMONDS APPROX WT 3.00CT G-I, SI-1 TO SI-2, TL WT OF BRACELET 17.11DWT
62	THREE STAMPED & TESTED 14K-18K YELLOW GOLD FASHION RINGS. ONE RING SET WITH 14MM X 10MM OVAL SHELL CAMEO, ONE WHITE OPAL CUT OVAL CABOCHON AND IS PRONG SET APPROX 0.60CT, TEN WHITE OPALS CUT IN ROUND SHAPED CABOCHON AND ARE PRONG SET APPROX 0.05CT, ONE WHITE OPAL CUT IN OVAL SHAPED CABOCHON, PRONG SET, APPROX 0.30CTS. TL WT OF OPALS 1.40CT, TL WT OF RINGS 9.88DWT
63	ONE STAMPED 18K YELLOW GOLD CAST AND HAND ASSEMBLED V MOTIF PENDANT ATTACHED TO CHAIN 14" LONG WITH V SPRING CLOSURE AND SAFETY CHAIN. TOTAL LENGTH OF NECKLACE 16" CONTAINING SEVENTEEN CHANNEL SET ROUND BRILLIANT DIAMONDS APPROX 1.50CT G-H, VS-1 TO VS-2, TL WT OF PENDANT ATTACHED TO CHAIN 13.81DWT
64	ONE LOT ELECTRONICALLY TESTED 14K YELLOW AND WHITE GOLD CAST AND HAND ASSEMBLED CIRCLE, TURTLE AND DANGLE STYLE BROOCHES CONTAINING: SEVEN PRONG SET ROUND BRILLIANT CUT DIAMONDS APPROX 0.53CT G-I, SI-1 TO SI-2, TWENTY SIX BEAD SET ROUND BRILLIANT AND SINGLE CUT DIAMONDS APPROX 0.55CT G-I, VS-2 TO I-1, FOUR PRONG SET MIXED CUT NATURAL BLUE SAPPHIRES APPROX 0.88CT, FOUR PRONG SET WHITE OPALS CUT OVAL SHAPED CABOCHON APPROX 1.20CT, FOUR SEED PEARLS, SIXTEEN AKOYA CULTURED PEARLS 4.0MM TO 4.1MM. TL WT OF BROOCHES 17.75DWT
65	ONE STAMPED 14K YELLOW GOLD LADY'S CAST AND HAND ASSEMBLED BANGLE STYLE W/V SPRING CLOSURE AND SAFETY CLASP CONTAINING: EIGHT CRYSTAL OPALS CUT OVAL SHAPED CABOCHONS APPROX 6.00CT, FOURTEEN PRONG SET ROUND BRILLIANT CUT DIAMONDS APPROX 0.62CT G-I, SI-1 TO I-1. TL WT OF BRACELET 11.57DWT
66	THREE STAMPED AND TESTED 14-18K YELLOW GOLD LADY'S CAST AND HAND ASSEMBLED FASHION RINGS CONTAINING: ONE PEAR SHAPED CRYSTAL OPAL PRONG SET CABOCHON APPROX 8.56CT, NINETEEN PRONG SET BRILLIANT CUT DIAMONDS APPROX 0.85CT G-I, VS-1 TO VS-2. TL WT OF RINGS 17.68DWT





67	THREE STAMPED 14K YELLOW GOLD LADY'S CAST AND HAND ASSEMBLED CHARM PENDANTS, THE LEAF IS ALSO A BROOCH, SIX COLORED STONES IN THE TREE OF LIFE CHARM ARE GLASS, CONTAINING: FIFTY FIVE PRONG SET ROUND MODIFIED MIXED CUT NATURAL RUBIES APPROX 3.85CT, TWO AKOYA CULTURED PEARLS 5.8MM TO 6.1MM. TL WT OF PENDANTS 24.86DWT
68	ONE SET ELECTRONICALLY TESTED 18K WHITE GOLD LADY'S CAST AND HAND ASSEMBLED FLOWER DESIGN EARRINGS AND CHAIN NECKLACE 18.0", 1.5MM WIDE W/SPRING RING CLASP CONTAINING: FOUR BEZEL SET EMERALD STEP CUT NATURAL EMERALDS APPROX 0.68CT, ELEVEN PRONG SET ROUND MODIFIED MIXED CUT NATURAL EMERALDS APPROX 0.33CT, TL WT OF STONES 1.01CT, TL WT OF CHAIN NECKLACE 11.99DWT
69	TWO ELECTRONICALLY TESTED 14K YELLOW GOLD LADY'S HEART SHAPED BRACELETS, EACH 7" LONG CONTAINING: FIFTEEN PRONG SET MIXED CUT NATURAL AMETHYSTS APPROX 10.95CT. TL WT OH BRACELETS 9.37DWT
70	ONE LOT STAMPED YELLOW GOLD PENDANTS AND CHAINS LIGHT ROPE, SERPENTINE, AND HERRINGBONE W/SPRING RING CLASP CONTAINING: ONE PRONG SET BRILLIANT CUT DIAMOND APPROX 0.20CT I, SI-1, THREE PRONG SET SINGLE CUT DIAMONDS APPROX 0.04CT H-I, VS-1 TO VS-2, ONE PRONG SET MIXED CUT ALMANDITE GARNET APPROX 0.90CT, TWENTY -EIGHT CHANNEL SET SQUARE CUT NATURAL SAPPHIRES APPROX 1.40CT, ONE BEZEL SET MARQUISE MIXED CUT NATURAL BLUE SAPPHIRE 6.00 X 3.00 X 1.95MM APPROX 0.27CT, FOUR BEZEL SET ROUND BRILLIANT CUT DIAMONDS APPROX 0.02CT H-I, SI-1 TO I-1, TL WT OF PENDANT AND CHAINS 7.99DWT
71	ONE LOT STAMPED 14-18K WHITE AND YELLOW GOLD FILIGREE RINGS AND WEDDING BAND CONTAINING: ONE PRONG SET OLD MINE CUT DIAMOND APPROX 0.63CT J, VS-1,, THREE BEAD SET OLD EUROPEAN CUT DIAMONDS APPROX 0.33CT H-I, VS-1 TO VS-2, TL WT OF RINGS AND BAND 6.35DWT
72	THREE WHITE GOLD RINGS: ONE STAMPED 14K WHITE GOLD LADY'S ENGAGEMENT RING AND WEDDING BAND CONTAINING: ONE PRONG SET ROUND BRILLIANT CUT DIAMOND APPROX 0.29CT G, VS-2, FOUR CHANNEL SET BAGUETTE CUT TAPERED DIAMONDS APPROX 0.14CT F-G, VS-1 TO VS-2, TL WT OF RING AND BAND 3.03DWT, TWO STAMPED WHITE GOLD ENGAGEMENT RINGS CONTAINING: ONE PRONG SET OLD EUROPEAN CUT DIAMOND APPROX 0.35CT I, VS-1, ONE PRONG SET OLD EUROPEAN CUT DIAMOND APPROX 0.17CT G VS-1, SIX PRONG SET SINGLE CUT DIAMONDS APPROX 0.10CT G-I, VS-1 TO VS-2 TL WT OF RINGS 2.91DWT
73	THREE GOLD RINGS: ONE STAMPED 14K YELLOW GOLD LADY'S CLUSTER VICTORIAN RING CONTAINING: SEVEN PRONG SET OLD EUROPEAN CUT DIAMONDS APPROX 0.37CT BROWN VS-1, SI-1 TL WT OF RING 1.99DWT, TWO STAMPED AND TESTED 10-14K YELLOW GOLD SOLITAIRE ENGAGEMENT RINGS CONTAINING ONE PRONG SET OLD EUROPEAN CUT DIAMOND APPROX 0.86CT LT BROWN, VS2, ONE PRONG SET OLD EUROPEAN CUT DIAMOND .035CT [DIAMOND IS CHIPPED] H, I-1, TL WT OF TWO RINGS 2.88DWT
74	FIVE STAMPED & TESTED 14-21K YELLOW GOLD CHAIN BRACELETS 7.0" LONG CONTAINING: SEVEN BRIOLETTE STANDARD CUT NATURAL BLACK ONYX 8.0MM X 8.00 X 8.0MM APPROX 20.51CT. TL WT OF CHAIN BRACELETS 22.57DWT

75	ONE STAMPED 18K YELLOW GOLD LADY'S SICILY PENDANT AND CHAIN 20.0" LONG, 3.0MM FLAT CURB LINK W/LOBSTER CLASP. TL WT OF NECKLACE 11.82DWT
76	2-14K NECKLACES: CLAM SHELL NECKLACE 8.8G, CHAIN AND LOCKET 8.2G
77	ONE STAMPED 14K YELLOW GOLD CAST AND HAND ASSEMBLED LIGHTER 2.25" X 1 1/8" ENGRAVED WHS ON TOP, TRADE MARK TIFFANY AND COMPANY. TL WT OF LIGHTER 32.11DWT
78	ONE STAMPED 14K WHITE GOLD CAST 5 STONE RING WITH A TAPERED SHANK TRADE MARK TRADITION CONTAINING: FIVE BEAD SET ROUND BRILLIANT CUT DIAMONDS APPROX 0.60CT I-L, VS-1 TO VS-2. TL WT OF RING 4.94DWT
79	ONE STAMPED 14K YELLOW GOLD MAN'S CAST 6 STONE RING CONTAINING: ONE BEAD SET ROUND BRILLIANT CUT DIAMOND APPROX 0.41CT, J, VS-1, TWO BEAD SET ROUND BRILLIANT CUT DIAMOND APPROX .015CT H-I, VS-1 TO VS-2, 3 BEAD SET SINGLE CUT DIAMONDS APPROX 0.13CT H-I, VS-1 TO VS-2 TL WT OF RING 8.9DWT
80	82 MORGAN DOLLARS: 1878, 4-1879, 1879O, 3-1880, 3-1881, 2-1881O, 1882, 5-1883, 1883S, 2-1884, 1884S, 5-1885, 1885O, 2-1896, 1896O, 3-1887, 1888O, 1889, 4-1889O, 5-1889O, 6-1991, 2-1991S, 2-1991O, 1892O, 3-1896O, 1897S, 2-1897O, 1899O, 1900, 3-1900O, 2-1901O, 1902, 1902O, 1904O, 2-1921, 3-1921D, 3-1921S
81	1970 KRUGERRAND 1 OZ FINE GOLD
82	AMERICAN ARTS GOLD MEDALLION: GRANT WOOD 1 OZ GOLD
83	8 NICKEL THREE CENT PIECES: 4-1865, 1869, 1873, 1874, 1881
84	1993 WWII 50TH ANNIVERSARY 3 PC UNCIRCULATED SET: FIVE DOLLAR GOLD, SILVER DOLLAR AND HALF DOLLAR
85	14 OZ OF .999 FINE SILVER: 1990 AMERICAN SILVER EAGLE & 13 ASSORTED 1 OZ ROUNDS
86	2 AMERICAN EAGLE PLATINUM ONE HUNDRED COINS: 1 OZ .9995 EACH
87	1996 FIFTY DOLLAR 1 OZ GOLD CANADIAN MAPLE LEAF: .9999 FINE GOLD
88	SERIES 1922 U.S. \$50 LARGE SIZE GOLD CERTIFICATE
89	SERIES 1914 U.S. ONE HUNDRED DOLLAR LARGE SIZE FEDERAL RESERVE NOTE
90	SERIES 1934 U.S. ONE THOUSAND FEDERAL RESERVE NOTE
91	1987 CONSTITUTION COINS IN WOODEN PRESENTATION BOX: 4 COIN SET CONTAINS FIVE GOLD IN PROOF AND UNCIRCULATED, ONE DOLLAR IN PROOF AND UNCIRCULATED
92	13 BICENTENNIAL 3 PC PROOF SETS 40% SILVER
93	12 BICENTENNIAL 3 PC UNCIRCULATED SETS 40% SILVER
94	10 OZ ENGELHARD .999 FINE SILVER BAR
95	3 U.S. LIBERTY HEAD FIVE GOLD PIECES: 1906S, 2-1907
96	10 COMMEMORATIVE U.S. HALF DOLLARS INCLUDING: 4-1893 COLUMBIAN, 1918 ILLINOIS, 1923S MONROE DOCTRINE, 2-1946, 2-1946S BOOKER T WASHINGTON
97	5 UNCIRCULATED 1883CC MORGAN SILVER DOLLARS

LOT 88





98	U.S. GOLD COIN JEWELRY: 14K MONEY CLIP W/ 1910 INDIAN HEAD TEN DOLLAR GOLD, PR 14K GOLD CUFF LINKS [EACH CONTAINING 1910 \$2 1/2 INDIAN HEAD GOLD COIN], TIE TACK 14K BEZEL CONTAINING ONE DOLLAR LIBERTY HEAD GOLD COIN 59.8G TL WT
99	ONE STAMPED 18K YELLOW GOLD MACHINE MADE AND ASSEMBLED BRAIDED DESIGN BRACELET W/ V SPRING CLOSURE AND SAFETY CLASP. THE BRACELET IS 7.25" LONG AND 17MM WIDE WEIGHING 18.82DWT
100	ONE STAMPED 14K WHITE GOLD LADY'S CLUSTER RING WITH A HALF ROUND SHANK CONTAINING: ONE PRONG SET BRILLIANT CUT DIAMOND 6.78 X 6.73 X 4.57MM APPROX 1.27CT J I-1, TWO ILLUSION SET ROUND BRILLIANT CUT DIAMONDS APPROX 0.34CT, SIXTEEN BEAD SET SINGLE CUT DIAMONDS APPROX 0.22CT H-J, VS-1 TO SI-1. TL WT OF RING 4.46DWT
101	TWO WRISTWATCHES: ONE HAND ASSEMBLED TIFFANY AND COMPANY ROUND CASE PORTFOLIO STAMPED GOLD PLATED STAINLESS STEEL, QUARTZ MOVEMENT, MAN'S LeCOULTRE WRIST ALARM WATCH STAMPED 1/20TH 10K GOLD FILLED, BROWN LEATHER STRAP
102	ONE STAMPED 18K YELLOW GOLD LADY'S HAND ASSEMBLED FLOWER DESIGN BRACELET W/V SPRING CLOSURE AND SAFETY CLASP. BRACELET IS 7" LONG AND 18MM WIDE CONTAINING: NINE PRONG SET ROUND BRILLIANT CUT DIAMONDS APPROX 0.46CT G-I, VS-1 TO I-1, NINE PRONG SET DONUT SHAPED CABOCHON NEPHRITE JADE APPROX 6.36CT. TL WT OF BRACELET 6.36DWT
103	SIX STAMPED 10-14K YELLOW GOLD CLUSTER AND CAMEO RINGS. THE ORANGE CAMEO IS SET IN BASE METAL. CONTAINING: ONE BEZEL SET ROUND BRILLIANT DIAMOND APPROX 0.02CT K, SI-1, FOUR WHITE OPALS ROUND SHAPED CABOCHON AND PRONG SET APPROX 0.16 CARATS, ONE PRONG SET MARQUIS CABOCHON NATURAL BLACK ONYX APPROX 1.84CT. TWENTY-SEVEN PRONG SET SINGLE CUT DIAMONDS APPROX 0.44CT H-L, VS-1 TO SI-1, NINETEEN PRONG SET ROUND BRILLIANT CUT DIAMONDS APPROX 0.37CT G-I, VS-2 TO SI-1, ONE PRONG SET MARQUISE MIXED CUT NATURAL RUBY APPROX 0.36CT, ONE PRONG SET OVAL MIXED CUT NATURAL EMERALD APPROX 0.17CT. TL WT OF RINGS 6.09DWT
104	PAIR OF 14K WHITE GOLD CUFF LINKS 9.1G
105	THREE ELECTRONICALLY TESTED 14-18K YELLOW GOLD CAST AND HAND ASSEMBLED HEART, SEA URCHIN & CLUSTER BROOCHES. THE GARNET CLUSTER IS BASE METAL. CONTAINING: ONE PRONG SET OLD EUROPEAN CUT DIAMOND APPROX 0.50CT J, I-2, ONE PRONG SET ROUND BRILLIANT CUT DIAMOND APPROX 0.07CT G, VS-1, 132 SEED PEARLS 1.8MM TO 1.1MM IN SIZE, TL WT OF BROOCHES 10.65DWT
106	ONE LOT 10-18K YELLOW GOLD CAST AND HAND ASSEMBLED SIX CHARMS WITH CHAINS: SMALL TO WIDE HERRINGBONE CABLE LINK, SERPENTINE AND FANCY LINK. TL WT OF CHAINS AND CHARMS 27.84DWT

LOT 113



LOT 114



107	ELGIN 14K GOLD CASE 8S, 7J, RUNNING WITH 14K GOLD CHAIN [17.4G] AND 2 FOBS
108	27 STANDING LIBERTY QUARTERS: 1917 TYPE I, 1917 TYPE II, 2 1918, 23 MIXED DATES AND MINT MARKS
109	LAST FIVE YEARS OF BUFFALO NICKELS BOOK CONTAINING: 1937, 1934D, 1935, 1935D, 1935S, 1936, 1936D, 1936S, 1937, 1937D, 1937S, 1938D ALL FULL HORN, AND 1900 LIBERTY NICKEL
110	300 FRANKLIN HALVES MIXED DATES AND MINT MARKS
111	504 U.S. DIMES: 501 MERCURY DIMES COMMON MIXED DATES AND MINT MARKS, 3 ROOSEVELT DIMES ALL PRE-1965
112	437 ROOSEVELT DIMES COMMON MIXED DATES AND MINT MARKS: 435 PRE-1965, 2 CLAD
113	15 U.S. PROOF SETS: 1984, 1986, 1993, 1994, 1995, 1996, 1997, 1998, 2-1999, 2000, 2001, 2-2002, 2003
114	ONE STAMPED 14K WHITE GOLD LADY'S ENGAGEMENT RING AND WEDDING BAND W/ TAPERED SHANK CONTAINING: ONE PRINCESS CUT DIAMOND MEASURING 7.23 X 6.58 X 4.94 [DEPTH EST] APPROX WEIGHT 2.00CT G-H, I-2, EIGHTY-THREE PRONG SET ROUND BRILLIANT CUT DIAMONDS G-I, I-1 APPROX 1.24CT. TL WT OF RING AND WEDDING BAND 6.73CT
115	1900 O/CC MORGAN SILVER DOLLAR
116	1855O U.S. ONE DOLLAR GOLD COIN [RIM DENTS OBVERSE]
117	1989 U.S. AMERICAN GOLD EAGLE: 1 OZ FINE GOLD
118	TWO STAMPED 14K YELLOW GOLD MACHINE MADE CHAIN NECKLACES 24.0" LINE MEDIUM ROLLO AND ROPE W/LOBSTER CLAW CLASP; TL WT OF NECKLACES 19.93DWT
119	AMERICAN WALTHAM STAMPED 14K YELLOW GOLD HUNTER STYLE CASE MODEL 1891, SERIAL # 11942951, 34MM CIRCA 1902. THE WATCH ALSO HAS 14K YELLOW GOLD 30" ROPE CHAIN WITH SPRING CLASP. EST WT OF CHAIN 6.6DWT, TL WT OF WATCH 28.29DWT

LOT 115



LOT 116

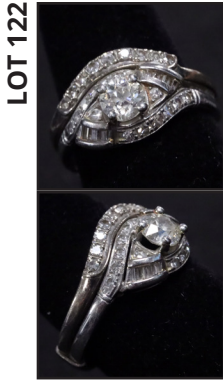


LOT 117



LOT 119





120	<p>THREE 14K GOLD RINGS: ONE YELLOW GOLD 3 STONE RING W/HALF ROUND SHANK CONTAINING: ONE PRONG SET ROUND BRILLIANT CUT DIAMOND APPROX 0.11CT G, VS-1, TWO FLUSH SET BAGUETTE SYNTHETIC RUBIES APPROX 0.06CT, TL WT OF RING 1.31DWT, ONE YELLOW GOLD SOLITAIRE RING W/ HALF ROUND SHANK CONTAINING: ONE PRONG SET BRILLIANT CUT ROUND DIAMOND APPROX 0.30CT I, SI-2, TL WT OF RING 1.76DWT, ONE WHITE GOLD 3 STONE RING W/ HALF ROUND SHANK CONTAINING: ONE PRONG SET OLD EUROPEAN CUT DIAMOND APPROX 0.57CT K, SI-1, TWO PRONG SET BRILLIANT CUT ROUND DIAMONDS APPROX 0.17CT H-I, VS-2 TO SI-1, TL WT OF RING 2.76DWT</p>
121	<p>TWO PAIR STAMPED 14K YELLOW GOLD CAST AND DIE STRUCK VICTORIAN AND DANGLE EARRINGS BOTH SCREW BACK. VICTORIAN HAS TWO RED GLASS BEADS AND EMBELLISHED WITH BLACK TRACERY ENAMEL. TL WT OF BOTH PAIR 8.34DWT</p>
122	<p>ONE STAMPED PLATINUM & 14K WHITE GOLD LADY'S ENGAGEMENT RING SOLDERED TO WEDDING BAND CONTAINING: ONE PRONG SET OLD EUROPEAN CUT DIAMOND APPROX 0.69CT J VS-1, SIX CHANNEL SET BAGUETTE CUT DIAMONDS APPROX 0.13CT G-I, VS-1 TO VS-2, THIRTY-TWO PRONG SET SINGLE CUT DIAMONDS APPROX 0.64CT G-I, VS-1 TO VS-2. TL WT OF RING 4.84CT</p>
123	<p>ONE LOT ELECTRONICALLY TESTED 10-14K YELLOW GOLD NUGGET AND LINK BRACELETS WITH V SPRING CLOSURES. TL WT OF BRACELETS 69.78DWT</p>
124	<p>ONE PAIR STAMPED 14K YELLOW GOLD STUD EARRINGS W/FRICTION POST CONTAINING: TWO PRONG SET ROUND BRILLIANT CUT DIAMONDS APPROX 1.22CT, TL WT OF EARRINGS 1.04DWT</p>
125	<p>ONE STAMPED 14K YELLOW GOLD LADY'S S-LINK TENNIS STYLE BRACELET W/ V SPRING CLOSURE AND SAFETY CHAIN. THE BRACELET IS 7.5" LONG, 7MM WIDE CONTAINING: THIRTY-FOUR PRONG SET ROUND BRILLIANT CUT DIAMONDS APPROX 6.00 CT, TL WT OF BRACELET 14.20DWT</p>
126	<p>LADY'S BEAD NECKLACE W/14K WHITE GOLD CLASP CONTAINING: UNIFORM DOUBLE STRAND PEARL NECKLACE 15" CHOKER LENGTH WITH 85 AKOYA CULTURED PEARLS 5.5MM TO 6.0MM, GOOD MATCHING, THIRTY-EIGHT BEAD SET SINGLE CUT DIAMONDS APPROX 0.47CT. TL WT OF NECKLACE 450.23DWT</p>
127	<p>ONE LOT STAMPED 14-18K YELLOW GOLD CAST AND HAND ASSEMBLED SINGLE EARRING AND THREE PENDANTS. THE ROUND ELF CHARM HAS LG OVAL GLASS RED STONE, 5.87MM CULTURED PEARL, BLUE AND GREEN SYNTHETIC STONE EYES. ONE PENDANT IS SET WITH A NATURAL 34MM X 22MM LIGHT GREEN JADEITE STONE. THE SINGLE EARRING IS SET WITH A 20MM MABE PEARL. CONTAINING: FOUR PRONG SET ROUND MIXED CUT NATURAL RUBIES APPROX 0.84CT, ONE PRONG SET CARVED LEAF CABOCHON MIXED CUT NATURAL BLUE SAPPHIRE APPROX 1.21CT. TL WT OF THREE PENDANTS 21.05DWT</p>

128	ONE LOT OF TEN PAIR ELECTRONICALLY TESTED AND STAMPED DOME SHAPED, CLUSTER, STUD AND DANGLE EARRINGS CONTAINING: 44 FRESH WATER PEARLS, 43 AKOYA CULTURED PEARLS 3.0MM TO 5.0MM, 32 AKOYA CULTURED PEARLS 4.5MM TO 5.0MM, 32 AKOYA CULTURED PEARLS 4.5MM TO 5.0MM, SIX AKOYA CULTURED PEARLS 5.0MM TO 6.3MM, FOUR PEG SET ROUND CABOCHON NATURAL PINK CORALS 26.60 X 1.00 X 8.20MM [DEPTH EST] APPROX 62.32CT. TWENTY-SEVEN BEAD SET ROUND NATURAL EMERALDS APPROX 1.62CT. TL WT OF EARRINGS 57.02DWT
129	U.S. 1854 W/ARROWS SEATED LIBERTY HALF DOLLAR
130	TWO U.S. LIBERTY HEAD TEN DOLLAR GOLD COINS; 1894, 1897
131	ONE STAMPED 14K WHITE GOLD LADY'S FILIGREE BRACELET W/V SPRING CLOSURE AND FOLD OVER SAFETY CLASP. THE BRACELET IS BEZEL SET W/TWO DIAMOND SHAPED GLASS STONES CONTAINING: THREE BEAD SET SINGLE CUT DIAMONDS APPROX 0.10CT H-I, SI-2 TO I-1. TK WT OF BRACELET 5.54DWT
132	15 U.S. SPECIAL MINT SETS: 7-1966, 8-1967
133	10 EISENHOWER PROOF DOLLARS: 2-1971, 4-1973, 4-1974
134	15 EISENHOWER UNCIRCULATED DOLLARS: 13-1971, 2-1972
135	1896 S U.S. LIBERTY HEAD \$20 GOLD COIN
136	2 U.S. PRESTIGE SETS: 1986, 1993
137	13 SILVER TOKENS AND MEDALS: SET OF 12 TOKENS OF ALASKA 1 OZ .999 FINE SILVER, FRANKLIN MINT FIRST STEP ON THE MOON SOLID STERLING MEDALLION
138	19 YEAR SETS AND OTHER: 2-1963P, 2-1964D, 3-1963P, 3-1963D, 2-1965P, 2-1966P, 2-1967, 3-1964 TYPE SETS [ONE MISSING CENT]
139	2 U.S. BUST HALF DOLLARS: 1828 SQ BASE 2 LG 8, 1835
140	SERIES 1934 U.S. FIVE HUNDRED DOLLAR FEDERAL RESERVE NOTE
141	2001 FIFTY DOLLAR CANADIAN GOLD MAPLE LEAF 1 OZ .9999 FINE GOLD
142	7 U.S. LARGE CENTS: 1828, 1834, 1840, 2-1845, 1850, 1854
143	2-1982 AMERICAN ARTS COMMEMORATIVE FRANK LLOYD WRIGHT 1/2 OZ GOLD COINS
144	1922 U.S. TWENTY DOLLAR NATIONAL CURRENCY FIRST NATIONAL BANK OF STANTON, IOWA
145	20 U.S. MINT SETS: 5-1977, 5-1978, 5-1979, 5-1984
146	29 U.S. PROOF SETS: 1970, 1971, 1972, 2-1973, 1974, 1976, 5-1978, 1986, 2-1988, 2-1989, 2-1989, 20-1990, 2-1991, 3-1992, 3-1993
147	8 -1983/1984 LOS ANGELES OLYMPIC DOLLARS: 1983, 1984 PROOF, 3-1983, 3-1984 UNCIRCULATED



LOT 149



LOT 157



LOT 163



148	48 BUFFALO NICKELS: 1913 TYPE I, 1915, 1916, 1917, 1918, 20 NICE 1936, 23 MIXED DATES AND MINT MARKS
149	2 SERIES OF 1874 FRACTIONAL CURRENCY; TEN AND TWENTY-FIVE CENT NOTES
150	4-1984 LOS ANGELES OLYMPIC TEN DOLLAR GOLD COINS: P, D, S & W MINT MARKS, .4837 PURE GOLD EACH
151	U.S. COMMEMORATIVE COINS: 1986 LIBERTY PROOF DOLLAR, 2-1986 LIBERTY DOLLAR/ HALF SETS, 1986 UNCIRCULATED LIBERTY DOLLAR, 1986 LIBERTY HALF DOLLAR, 1984 WORLD CUP PROOF DOLLAR, 1987 CONSTITUTION PROOF DOLLAR
152	59 U.S. BARBER HALF DOLLARS: 1914, 58 COMMON MIXED DATES AND MINT MARKS
153	126 BARBER QUARTERS AND OTHERS: 126 BARBER QUARTERS MIXED DATES AND MINT MARKS, 1929S STANDING LIBERTY QUARTER, 1899 BARBER DIME
154	120 BARBER DIMES MIXED DATES AND MINT MARKS
155	107 INDIAN CENTS AND OTHER: 1859, 1860, 1862, 1863 CN, 1864 BRONZE, 1879, 102 MIXED DATES, ONE ENCASED INDIAN CENT W/DECATUR ADVERTISING, AND ONE FOREIGN COIN.
156	11-1 OZ .999 FINE SILVER ENGELHARD PROSPECTOR ROUNDS
157	1878S U.S. TRADE DOLLAR
158	ONE LOT ELECTRONICALLY TESTED 10-14K YELLOW GOLD DIE STRUCK AND ASSEMBLED VINTAGE PINS. THE LARGEST PIN IS BASE METAL WITH PAINTED PORCELAIN. THE BLACK OVAL STONE IS GLASS SET IN BASE METAL. THE SHELL CAMEO IS SET IN 10K GOLD. THE ENGRAVED BROOCH IS 14K. TL WT OF PINS 35.20DWT
159	TWO STAMPED 14-18K WHITE GOLD CAST AND HAND ASSEMBLED 3-STONE AND ENGAGEMENT RINGS CONTAINING: THREE PRONG SET ROUND MIXED CUT NATURAL SAPPHIRES APPROX 3.57CT, TWENTY-FOUR BEAD SET SINGLE CUT DIAMONDS APPROX 0.22CT G-J, VS1 TO SI-1, ONE ILLUSION SET ROUND BRILLIANT CUT DIAMOND APPROX 0.13CT I, VS-1. TL WT OF RINGS 4.87DWT
160	ONE LOT STAMPED AND TESTED 14K YELLOW AND WHITE GOLD LADY'S FASHION RINGS CONTAINING: SIXTY PRONG SET ROUND BRILLIANT CUT DIAMONDS APPROX 3.00CT H-K, S-12 TO I-1, SEVEN PRONG SET SINGLE CUT DIAMONDS APPROX 0.15CT G-I, VS-1 TO VS-2, ONE MABE PEARL 11.9MM TO 12MM IN SIZE. TL WT OF RINGS 12.25DWT
161	TWO STAMPED AND TESTED 14K YELLOW GOLD LADY'S CAST RETRO RINGS. THE DOUBLE HEART RING IS SET WITH A SYNTHETIC RUBY. THE BOW DESIGN RING HAS A RED GLASS STONE IN THE CENTER. CONTAINING: ONE BEAD SET ROUND BRILLIANT CUT DIAMOND G, SI-2, ONE BEAD SET OLD EUROPEAN CUT DIAMOND 0.06CT I, VS-2, THREE BEAD SET SINGLE CUT DIAMONDS 0.06CT G-I, SI-1 TO I-1. TL WT OF RINGS 4.84DWT

162	FOUR STAMPED & TESTED YELLOW GOLD CAST ENGAGEMENT AND FASHION RINGS CONTAINING: ONE PRONG SET ROUND BRILLIANT CUT DIAMOND 0.24CT K,I-1, TWENTY-FIVE PRONG SET ROUND BRILLIANT CUT 0.41CT G-I, SI-1 TO SI-2, TWENTY BEAD SET SINGLE CUT DIAMONDS APPROX 0.07CT H-K,SI-1 TO SI-2, ONE PRONG SET OVAL MODIFIED MIXED CUT NATURAL BLUE TOPAZ APPROX 7.42CT, ONE PRONG SET OVAL MODIFIED MIXED CUT NATURAL EMERALD APPROX 0.22CT. TL WT OF RINGS 7.72DWT
163	18K YELLOW GOLD SET: NECKLACE 40.7G, BRACELET 18.5G, EARRING 2.8G
164	TWO STAMPED 22K YELLOW GOLD CAST CHARM AND MARQUISE LINK BRACELET W/ HOOK CLASPS CONTAINING: SIX BEZEL SHAPE CABOCHON JADEITE APPROX 3.74CT. TL WT OF BRACELETS 22.78DWT
165	ONE ELECTRONICALLY TESTED 14K YELLOW GOLD BOW DESIGN BROOCH 3.25" X 2" WIDE CONTAINING: ONE PRONG SET EMERALD CUT NATURAL CITRINE QUARTZ 23.83 X 19.11 X 12.19MM APPROX 39.87CT, FIVE PRONG SET ROUND CABOCHON STANDARD CUT RUBIES APPROX 0.95CT. TL WT OF BROOCH 25.68DWT
166	79 U.S. ONE DOLLAR SILVER CERTIFICATES: 1935 HAWAIIAN OVERPRINT, 30-1953, 48-1957
167	287 U.S. FRANKLIN HALF DOLLARS: MIXED DATES AND MINT MARKS
168	135 U.S. MERCURY DIMES, COMMON DATES AND MINT MARKS
169	1947 MEXICAN 50 PESO GOLD COIN, 37.5GR PURE GOLD
170	SUISSE 1/2 OZ .999.9 GOLD BAR IN 21K BEZEL APPROX 3.27G
171	CARSON CITY UNCIRCULATED SILVER DOLLARS: 1882,1883
172	SERIES 1929 U.S. \$100 NATIONAL CURRENCY NOTE, FEDERAL RESERVE BANK OF CHICAGO,1928 \$20 NATIONAL CURRENCY NOTE FEDERAL RESERVE OF CHICAGO
173	4 UNCUT SHEETS OF 16, 1988 U.S. ONE DOLLAR FEDERAL RESERVE NOTES
174	4 UNCUT SHEETS OF 16, 1995 U.S. TEN DOLLAR FEDERAL RESERVE NOTES
175	2-10 OZ ENGELHARD .999 FINE SILVER BARS
176	30-1 OZ .999 FINE SILVER ROUNDS
177	14 MORGAN SILVER DOLLARS: 1883O, 1884O, 1887, 2-1889, 1986O, 1900, 1921, 2-1921D, 4-1921S
178	14 PEACE DOLLARS: 4-1922, 1922S, 1924, 8-1923
179	1980 MOSCOW OLYMPIC 5 PIECE SET CONTAINING: 3-10 RUBLE, 2-5 RUBLE SILVER COINS, 5-1983 U.S. OLYMPIC UNCIRCULATED ONE DOLLAR COINS, 1976 4 PC CANADIAN OLYMPIC COIN SET W/2 TEN DOLLAR & 2 FIVE DOLLAR SILVER COINS
180	4 CANADIAN MAPLE LEAF COINS: 2-1 OZ .9995 PALLADIUM, 2-1 OZ .9999 SILVER
181	603 FOREIGN COINS FROM VARIOUS COUNTRIES, 3 TOKENS
182	3 POCKET WATCHES: ILLINOIS 21J BUNN SPECIAL G.F. CASE, MISSING CRYSTAL NOT RUNNING, BALL 19J G.F. CASE NOT RUNNING, ELGIN 15J G.F. CASE MISSING CRYSTAL NOT RUNNING

LOT 169



LOT 175



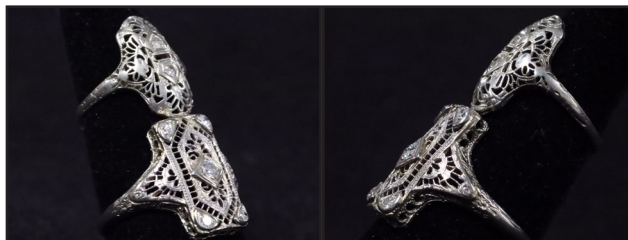
LOT 182



LOT 185



LOT 186



183	POCKET WATCHES AND OTHER: HAMPDEN/DUBER 17J G.F. CASE/CHAIN, RUNNING, JUNGHANS STEEL OUTER CASE RUNNING, LADY'S .800 SILVER CASE NOT RUNNING, EMPTY COIN SILVER CASE 52.6G, ELGIN 10S W/CHAIN RUNNING, LADY'S 10J SILVER CASE NOT RUNNING. 2 LADY'S WATCHES ONE MARKED .800 RUNNING, ONE SILVER IN COLOR NOT RUNNING, G.F. SLIDE CHAIN MISSING ONE SEED PEARL
184	18K MISC JEWELRY: 2 NECKLACES AND PENDANTS 8.7G TL WT, PAIR OF EARRINGS 4.8G, 2 ID BRACELETS 4.2G TL WT
185	ONE ELECTRONICALLY TESTED 14K YELLOW GOLD SQUARE RING W/TAPERED SHANK CONTAINING: NINE BEAD SET ROUND BRILLIANT CUT DIAMONDS MEASURING 3.50-340 X 2.07MM DEPTH EST, I-J, I-1 TO I-2. TL WT OF RING 7.24DWT
186	TWO STAMPED 18K WHITE GOLD LADY'S DIE STRUCK FILIGREE RINGS CONTAINING: ONE BEAD SET OLD EUROPEAN CUT DIAMOND APPROX 0.09CT G, SI-1, SIX BEAD SET SINGLE CUT DIAMONDS APPROX 0.18CT
187	FOUR GOLD RINGS: ONE STAMPED 14K YELLOW GOLD LADY'S HALO STYLE RING CONTAINING: ONE AKOYA PEARL 8.5MM X 8.5MM, WHITE IN COLOR W/ROSE OVERTONE, FOURTEEN PRONG SET ROUND MIXED CUT NATURAL RUBIES APPROX 0.70DWT. 14K YELLOW GOLD CAST 3 STONE RING CONTAINING: 3 PRONG SET NATURAL AMETHYSTS APPROX 1.44CT, TL WT OF RING 2.30DWT, TWO STAMPED 14K CLUSTER RINGS CONTAINING: NINE PRONG SET MARQUISE CUT NATURAL BLUE SAPPHIRES APPROX 0.72CT, EIGHT WHITE OPALS CUT IN MARQUISE SHAPED CABOCHON 6.0MM X 3.00MM X 1.50MM THICK APPROX 1.36CT, THREE PRONG SET ROUND BRILLIANT CUT DIAMONDS APPROX 0.09CT. TL WT OF RINGS 4.83CT
188	ONE LOT STAMPED AND TESTED 14K-18K YELLOW GOLD CAMEO RING 20MM X 15MM 2.95DWT, ACORN CIRCLE, MOTOROLA, CAMEO AND STICK PIN CONTAINING: ONE PRONG SET ROUND MIXED CUT DEMANTOID GARNET APPROX 0.16CT, FOUR SEED PEARLS 2.0MM. TL WT OF PINS 11.16DWT
189	ONE LOT 14-18K YELLOW GOLD HALO AND HOOP EARRINGS W/FRICTION POSTS W/NUT BACKS & SCREW BACKS. THE J SHAPED ARE GOLD FILLED. TWO PAIR ARE SET W/10MM ROUND AND 16MM X 12MM OVAL SHELL CAMEOS. ONE PAIR EARRINGS SET W/CABOCHON AVENTURINE QUARTZ. OTHERS INCLUDE 42 AKOYA CULTURED PEARLS, TWO PRONG SET CABOCHON NEPHRITE JADE APPROX 2.23CT, TL WT OF EARRINGS 18.90. THREE STAMPED GOLD FILLED AND 14K YELLOW GOLD HALO AND CAMEO PINS. THE SMALLER CAMEO IS IN GOLD FILLED BEZEL. PIN CONTAINS PRONG SET OVAL SHAPED NEPHRITE JADE APPROX 1.25CT, EIGHT AKOYA CULTURED PEARLS 2.8MM TO 3.0MM. TL WT OF PINS AND EARRINGS 33.91DWT
190	ONE STAMPED 18K WHITE GOLD LADY'S CLUSTER CHAIN BRACELET 6.5" LONG FLAT HERRINGBONE W/FOLD OVER CLASP CONTAINING: TWELVE PEAR SHAPED CABOCHON JADEITE APPROX 11.26CT, TL WT OF CHAIN BRACELET 10.94DWT. ONE STAMPED 18K LEAF DESIGN BROOCH 2.75" X 1" CONTAINING: TWELVE PRONG SET PEAR SHAPE CABOCHON JADEITE APPROX 3.62CT. TL WT OF BROOCH 6.06DWT
191	TWO 14K YELLOW GOLD NECKLACES: 30" HERRINGBONE YELLOW GOLD, FINE CHAIN W/2 RELIGIOUS PENDANTS, TL WT OF BOTH 30.8G

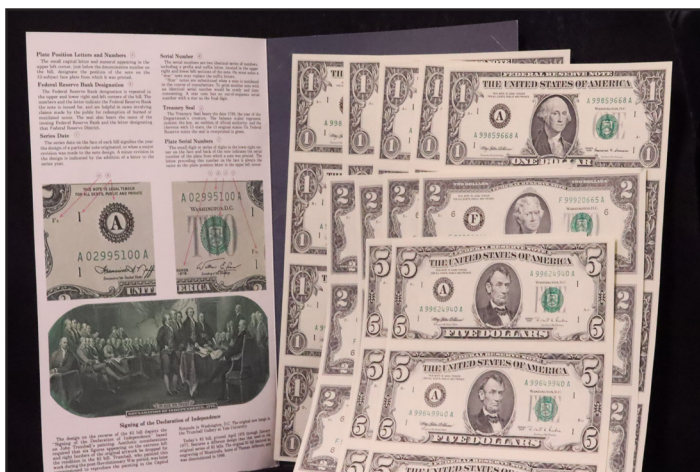


192	18K MULTICOLOR NECKLACE AND MATCHING BRACELET 52.2G TL WT
193	1920S ANSCO MEMO CAMERA W/SOFT SUEDE CASE IN ORIGINAL BOX
194	STERLING AND COSTUME JEWELRY: 4 STERLING NECKLACES 105.1G TL WT, APPROX 150 PIECES OF COSTUME JEWELRY; NECKLACES, EARRINGS, PINS, AND BRACELETS
195	TWO POCKET WATCHES: ILLINOIS 21J BUNN SPECIAL G.F. CASE, RUNNING, HAMILTON 992B G.F. CASE RUNNING [BROKEN CRYSTAL]
196	TWO PAIRS ELECTRONICALLY TESTED 14-18K YELLOW AND WHITE GOLD STUD AND HALF HOOP EARRINGS CONTAINING: TWO PRONG ROUND BRILLIANT CUT DIAMONDS APPROX 0.55CT, H-I, S-I, TWENTY CHANNEL SET ROUND BRILLIANT CUT DIAMONDS APPROX 2.18CT F-G, VS-1 TO SI-1. TL WT OF EARRINGS 6.08DWT
197	ONE LADY'S HAND ASSEMBLED RENEE RETRO MODERN CHASE WATCH COMPANY WRISTWATCH STAMPED 18K WHITE GOLD, 17J MOVEMENT, DOUBLE SNAKE CHAIN W/FOLD OVER CLASP CONTAINING: TEN BEAD SET SINGLE CUT DIAMONDS APPROX 0.29CT H-I, SI-1 TO I-1, TL WT OF WATCH 16.81DWT
198	1963 GERMAN 1 DUCAT J.F. KENNEDY 0.900 FINE GOLD COIN 3.45G
199	1917 U.S. TYPE I STANDING LIBERTY QUARTER
200	3-ONE DOLLAR U.S. GOLD COINS: 1851, 1853, INDIAN PRINCESS HEAD [DATE UNKNOWN] DAMAGED REVERSE DUE TO SOLDER MARK
201	SERIES 1914 U.S. FIVE DOLLAR LARGE SIZE FEDERAL RESERVE NOTE
202	10 U.S. PROOF SETS: 1955, 1956, 1957, 1958, 1959, 1960, 1961, 1962, 1963, 1964
203	1905 U.S. LIBERTY HEAD TEN DOLLAR GOLD COIN
204	1987 W U.S. CONSTITUTION PROOF \$5 GOLD COIN
205	ENGELHARD 100 OZ .999 FINE SILVER BAR
206	U.S. STATE QUARTERS: COLLECTORS ALLIANCE GOLD PLATED STATE QUARTER COLLECTION; 1999 P&D, 2000 P&D, 2001 P&D, 2002 P&D, 2003 P&D, 2004 P&D, 2005 P&D. FIVE PIECE QUARTER SETS; 1999P, 1999D, 1999 5 PC GOLD EDITION, 1999 5 PC PLATINUM EDITION, GOLD PLATED QUARTERS; 2-5 PC 2001, 2-5 PC 2002, 2-5PC 2003
207	5 U.S. COMMEMORATIVE DOLLARS: 1995 SPECIAL OLYMPICS PROOF, 1993 THOMAS JEFFERSON 250TH ANNIVERSARY PROOF AND UNCIRCULATED, 1992 WHITE HOUSE 200TH ANNIVERSARY, 1987 CONSTITUTION PROOF



208	374 ROOSEVELT DIMES: 369 PRE-1965 MIXED DATES AND MINT MARKS, 5 CLAD
209	2 MORGAN SILVER DOLLARS: 1879S, 1879O
210	3 MORGAN SILVER DOLLARS: 1880S, 1881S, 1882S
211	3 MORGAN SILVER DOLLARS: 1888O, 1899O, 1900O
212	100-1964 KENNEDY HALF DOLLARS
213	368 WASHINGTON QUARTERS, COMMON MIXED DATED AND MINT MARKS, ALL PRE-1965
214	10 EISENHOWER PROOF DOLLAR: 5-1971, 3-1972, 2-1974
215	7 U.S. SILVER PROOF SETS: 1992, 1993, 1994, 1995, 1996, 1997, 1998
216	12-1976 MONTREAL OLYMPICS TEN DOLLAR CANADIAN SILVER COINS
217	11 U.S. PROOF SETS: 1973, 5-1976, 5-1977
218	28 WALKING LIBERTY HALF DOLLARS, ALL COMMON DATES AND MINT MARKS
219	122 MERCURY DIMES IN WHITMAN FOLDERS INCLUDING: 1921, 1921D, 1926S, 119 MIXED DATES AND MINT MARKS
220	15 U.S. SILVER PROOF SETS: 1992, 3-1993, 2-1996, 1997, 2-1998, 3-1999, 2001, 2002
221	83 LIBERTY NICKELS: 1883 W/O CENTS, 1984, 1887, 1889, 1890, 1891, 1894, AND 76 MIXED DATES
222	JEFFERSON NICKELS: 2-11PC WAR NICKEL SETS, BAG CONTAINING: 52 WAR TIME NICKELS BAG WITH 23 MIXED DATES AND MINT MARKS AND 2 WAR NICKELS, AND ONE DATELESS BUFFALO NICKEL, WHITMAN BOOK II 1962-1986 CONTAINING: 45 MIXED DATES AND MINT MARKS, DANSCO ALBUM CONTAINING: 61 COINS 1965-1987 INCLUDING PROOF COINS
223	U.S. BICENTENNIAL ITEMS AND OTHER: 9-FIRST DAY COVERS W/MEDALLIONS 1972, 3-1973, 3-1974, 2-1975, 5-BICENTENNIAL MEDALS (2 SILVER, 3 BRONZE), 5-FRANKLIN MINT BRONZE MEDALLIONS LANCASTER PATRIOT SERIES
224	STAMPS AND POSTAL RELATED ITEMS: 1971 COMMEMORATION OF THE INAUGURATION OF THE POSTAL SERVICE COIN/STAMP SERVICE, 2-1979 BICENTENNIAL COVERS, 1944 WWII 50TH ANNIVERSARY COMMEMORATIVE SERIES, 12-UNUSED LEGAL SIZE TWENTY-FIVE CENT HOLOGRAM ENVELOPES, 1989 FIRST DAY COVER 20TH ANNIVERSARY OF THE MOON LANDING \$2.40 STAMP, AND APPROX 974 MIXED U.S. AND FOREIGN STAMPS
225	11 UNCUT SHEETS OF U.S. CURRENCY: 5 SHEETS OF 4-1999 ONE DOLLAR FEDERAL RESERVE NOTES, 4 SHEETS OF 4-1995 TWO DOLLAR FEDERAL RESERVE NOTES, 2 SHEETS OF 4-1995 FIVE DOLLAR FEDERAL RESERVE NOTES
226	18K MISC JEWELRY: 10 PR 18K EARRINGS 2.7G, 18K YELLOW GOLD ID BRACELET 5.1G [NON-GOLD JUMP RING]

LOT 225



LOT 227



LOT 228



LOT 231



LOT 232



227	ONE HAND ASSEMBLED BAUTTE & CIE HUNTER STYLE CASE STAMPED 18K YELLOW GOLD CASE, KEY WIND, MADE IN THE MID 1800s BY JEAN-FEANCIS BAUTTE CONTAINING: SIXTEEN BEAD SET ROSE CUT DIAMONDS APPROX 0.02CT H-K, SI-1 TO I-1. TL WT OF WATCH 25.38DWT
228	14K YELLOW GOLD CHARM BRACELET, 34.4G TL WT
229	TWO 14K YELLOW GOLD ROPE CHAIN NECKLACES. ONE DAMAGED, 38.4G TL WT
230	GORAM STERLING CAMELLIA PATTERN FLATWARE AND OTHER: 12 DESSERT FORKS 486.8G, 12 DINNER FORKS 616.1G, 1 MEAT FORK 70.2G, 2 SM COCKTAIL FORKS, 24 TEASPOONS 615.7G, 12 SOUP SPOONS 431.8G, 2 LG SERVING SPOONS 149.1, 2 SM SERVING SPOONS 73.7G, GRAVY LADLE 59.5G, 12 SPREADERS 310.7 G, HOLLOW HANDLE BUTTER KNIFE 15.0G EST, BUTTER KNIFE 40.0G, 12 HOLLOW HANDLE TABLE KNIVES 186.6G EST, 6 HOLLOW HANDLE STEAK KNIVES 93.3G EST, STERLING HOLLOW HANDLE BOTTLE OPENER 15.0G EST, AND 1 HOLLOW HANDLE REPOUSSE BAR KNIFE 15.0G EST
231	16-1 OZ .999 FINE SILVER BARS: 3 ENGELHARD, 13 GENERIC BARS
232	1988-FIVE DOLLAR AMERICAN GOLD EAGLE IN 14K GOLD CHAIN AND BEZEL. EST WT OF CHAIN AND BEZEL 2.9G, TL WT OF NECKLACE 6.3G
233	93 FOREIGN NOTES AND OTHER INCLUDING: BRAZIL, CANADA, JAPAN, MEXICO, GERMANY, FRANCE, TURKEY, THAILAND, AND 1852 ONE DOLLAR HUNGARIAN FUND CERTIFICATE
234	1993 BILL OF RIGHTS COMMEMORATIVE COINS, THREE COIN PROOF SET: DOLLAR, HALF, AND FIVE DOLLAR GOLD
235	ONE PAIR ELECTRONICALLY TESTED YELLOW GOLD LADY'S CAST AND HAND ASSEMBLED BEE EARRINGS W/SCREW BACKS, 18MM WIDE CONTAINING: EIGHT BEAD SET ROSE CUT DIAMONDS APPROX 0.04CT, TWO BEAD SET NATURAL BLUE SAPPHIRES APPROX 0.20CT, TWO BEAD SET SQUARE NATURAL RUBIES APPROX 0.10CT. TL WT OF EARRINGS 4.58DWT
236	44 U.S. UNCIRCULATED MINT SETS: 1968, 1970, 2-1973, 4-1975, 4-1976, 1977, 1978, 3-1979, 2-1981, 2-1984, 2-1985, 2-1986, 2-1987, 2-1988, 2-1989, 2-1990, 1991, 2-1993, 2-1994, 2-1995, 1996, 1997, 2-1998
237	8 STICK PINS, 8 MISC PINS: 10K YELLOW GOLD STICK PIN W/AMBER STONE 2.0G, 7 ASSORTED STICK PINS, 10K IBEW 30 YR PIN 1.2G, 7 MISC PINS
238	1936 U.S. LONG ISLAND COMMEMORATIVE HALF DOLLAR
239	TWO 14K YELLOW GOLD RINGS WITH COLORED STONES. 8.1G TL WT
240	14K WHITE GOLD CASE LADY'S LONGINES 17J W/DIAMOND ACCENTS, G.F. BAND, RUNNING
241	ONE LOT OF STAMPED & TESTED 14-21K YELLOW GOLD CAST AND HAND ASSEMBLED TWENTY-TWO CHARMS. HEART CHARM SET W/IMITATION STONES, HAND OF GOD CHARM SET W/IMITATION TURQUOISE, ANOTHER HEART STONE SET W/6MM CULTURED PEARL, FLOWER CHARM SET W/1.5MM ROUND NATURAL RUBIES, INITIAL A CHARM SET W CUBIC ZIRCONIA. TL WT OF CHARMS 39.29DWT
242	ONE STAMPED 14K WHITE GOLD LADY'S CAST AND HAND ASSEMBLED ENGAGEMENT RING AND WEDDING BAND CONTAINING: ONE PRONG SET OLD EUROPEAN CUT DIAMOND APPROX 0.95CT J VS-1, NINE PRONG SET SINGLE CUT DIAMONDS APPROX 0.95CT G*1, VS-1 TO VS-2. TL WT OF RING AND BAND 3.76

LOT 244



243	14K YELLOW GOLD LINK NECKLACE 47.2G
244	569 FOOTBALL CARDS MOSTLY 90's COMMONS INCLUDING: SUPER ROOKIE VINNY TESTAVERDE, SUPER ROOKIE TROY AIKMAN, ALL PRO MIKE SINGLETARY, ALL PRO LAWRENCE TAYLOR, ALL PRO JERRY RICE. SOME DAMAGE
245	25-1982 WASHINGTON PROOF HALF DOLLARS W/ORIGINAL PACKAGING
246	TWO STAMPED 14K YELLOW GOLD BRACELETS, ONE DOUBLE LINK WITH LOBSTER CLASP, ONE SINGLE LINK W/LOBSTER CLASP. TL WT OF BRACELETS 9.2G
247	ONE STAMPED 14K YELLOW GOLD LADY'S CAST SOLITAIRE PENDANT AND CHAIN 24" LONG, 0.75MM FLAT SERPENTINE CONTAINING: ONE PRONG SET MARQUISE SHAPED CUT DIAMOND APPROX 0.40CT. TL WT OF PENDANT AND CHAIN 1.45DWT
248	283 TOTAL LINCOLN CENTS INCLUDING: 257 WHEAT CENTS THAT INCLUDES: 1931S, 20 MISC MEMORIAL CENTS, 2 BOOKS MEMORIAL DATE SETS 1959-1982 [48 COINS], 1982 7PC LINCOLN VARIETY SET
249	STERLING AND COSTUME JEWELRY: STERLING NECKLACE AND PENDANT 4.0G, STERLING CUFF LINKS/TIE BAR 17.3G, APPROX 100 PIECES OF COSTUME INCLUDING NECKLACES, PINS, EARRINGS, WRISTWATCHES, BRACELETS, BOBBLES AND BEADS
250	2-1/2 OZ AMERICAN GOLD EAGLES: 1986, 2004

NOTES

